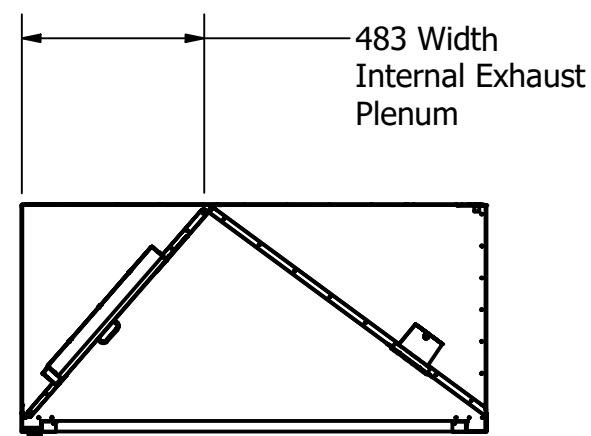
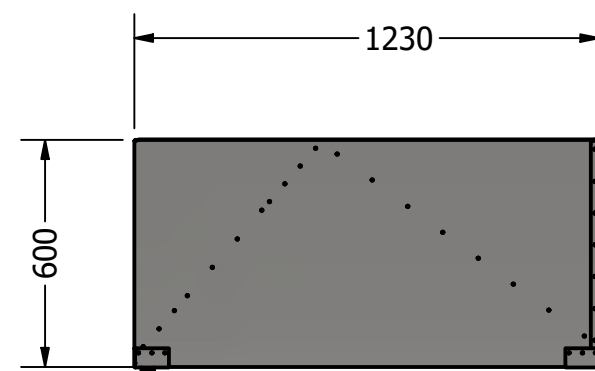
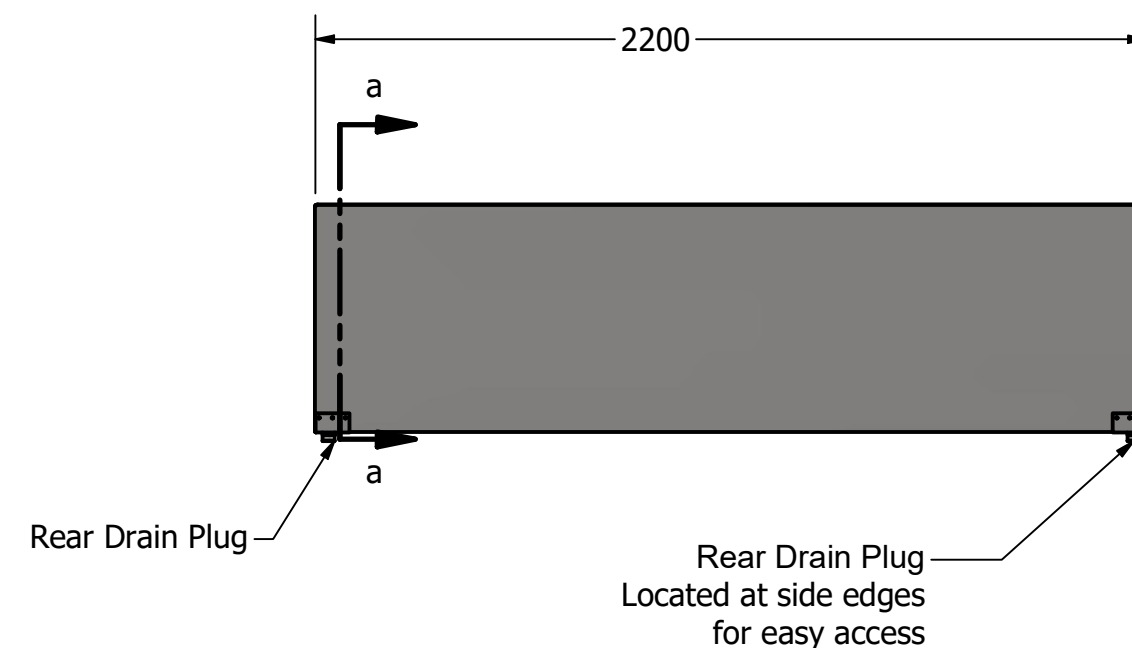


Designed & Manufactured in compliance with latest AS 1668.2-2024 Standard

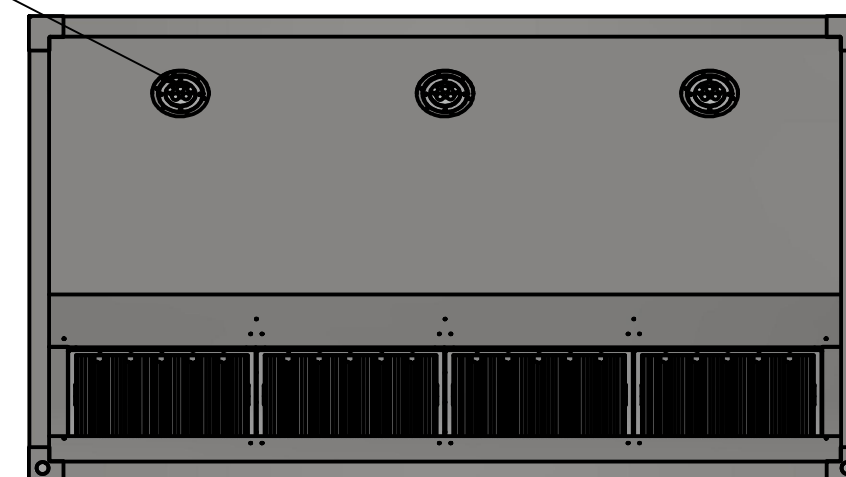


Sec a-a



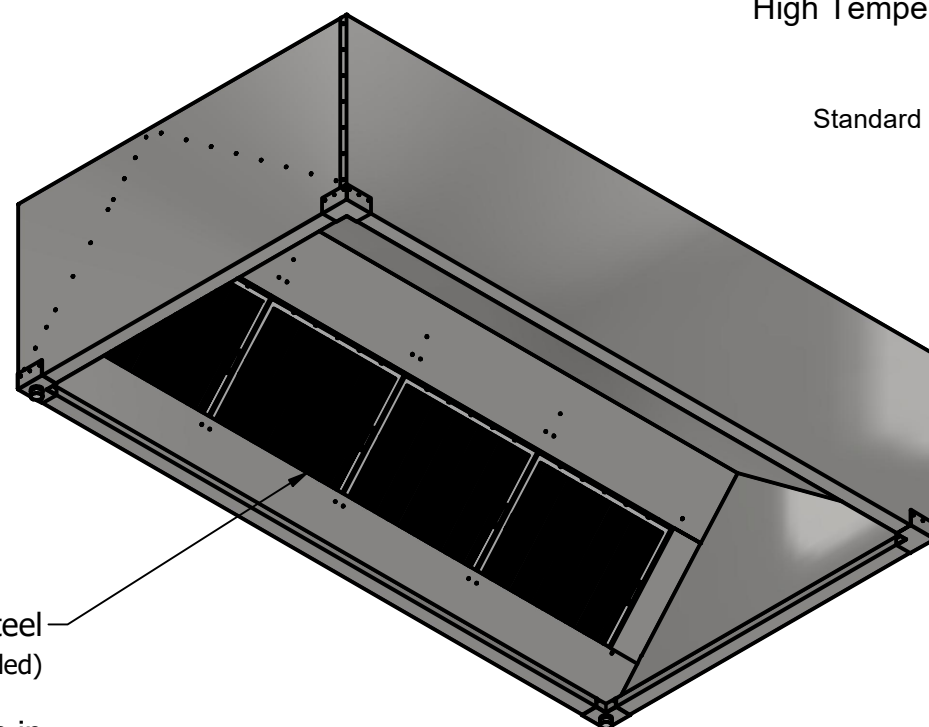
High Intensity LED light modules. IP67 rated.
High Temperature, Tempered Glass protectors

Low voltage LED Driver provided.
Standard 10A GPO to be provided above Canopy.



Stainless Steel
Baffle Filters (Included)

Washable in
Commercial Dishwasher



Approx Canopy Weight - 76 kg

NOTE. Standard Xtracta models do not have provision for
integrated return air handling. Return air must be provided
by other means into the facility as required.

All Dimensions are in millimetres - mm



PROJECT Xtracta - 2024				
DWG NO Xtracta 2024 - 22_1230				
SIZE A3	SCALE DNS	SHEET 1	DATE 26/02/2025	REV 2