

Xtracta[®]

Exhaust Canopy Solutions



SS high efficiency baffle filters fitted as standard. Filters fit into a standard dishwasher for easy cleaning, saving time and money.



Revolutionary filter bank design offers increased air flow and significantly reduces noise through the canopy.



Full open gutter with drain points to left and right hand side makes cleaning and Australian Standards compliance a breeze.



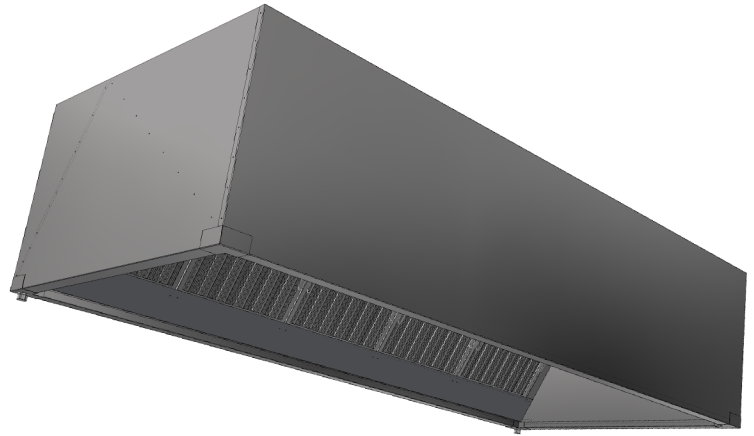
8 standard models held in stock for speedy delivery. If a standard size is not what you are after we can easily customize to suit your project needs.



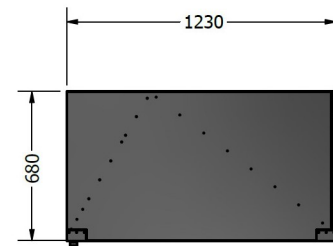
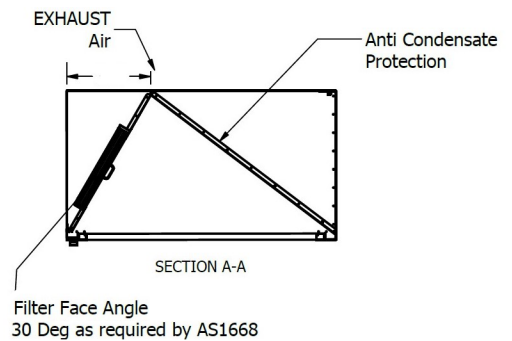
Latest canopy design with 30 degrees filter face angle and anti condensate feature for ease of AS 1668.2.2012 compliance. All canopies come with a certificate of compliance.



Fan and ducting kits to suit all Xtracta standard models.



- Easy clean design with full open gutter all the way around the canopy perimeter.
- No dividers between filters to reduce noise and offer increased performance.
- State of the art CAD design offers excellent value for money.
- No time to wait as standard models are readily available in stock.
- Sturdy stainless steel construction.
- Twin drain points to left and right hand side to suit all applications.
- Easy to install with optional ducting positions.



Note: Fire proof wall panels clad in 304 grade SS and canopy installation can be included as an optional extra.

Stock

| STANDARD FILTERED MODELS | In Stock |
|---|----------|
| Xtracta 1400 – 1400mmW x 680mmH x 1230mmD | ✓ |
| Xtracta 1800 – 1800mmW x 680mmH x 1230mmD | ✓ |
| Xtracta 2200 – 2200mmW x 680mmH x 1230mmD | ✓ |
| Xtracta 2600 – 2600mmW x 680mmH x 1230mmD | ✓ |
| Xtracta 3000 – 3000mmW x 680mmH x 1230mmD | ✓ |
| Xtracta 3600 – 3600mmW x 680mmH x 1230mmD | ✓ |
| Xtracta 3900 – 3900mmW x 680mmH x 1230mmD | ✓ |
| Xtracta Custom – 600-3900mmW x 680mmH x 1230mmD | ✗ |

| STANDARD STEAM ONLY MODELS | In Stock |
|--|----------|
| Xtracta XST - 1400mmW x 600mmH x 1100mmD | ✓ |
| Xtracta XST-C - 1100mmW x 600mmH x 1100mmD | ✓ |